

-PowerBreaker-

Dual Fully Populated Consumer Units

The Dual Fully Populated Consumer Units range are available in 5 Board layouts - 14 modules / 16 modules / 18 modules / 20 modules / 22 modules.

Dual Fully Populated Consumer Units Contents:-

- 2P Mains Switch 100A
- 2 x Neutral bars
- Detachable Spirit level
- Plus label kit
- 3 year Guarantee



Image showing PBPD14



PBPD14 - 14 Modules:-

- 8 MCB's - 1 x 40A, 3 x 32A, 1 x 16A, 3 x 6A
- 2 x RCCB 80A, Type A, 30mA
- 80A RCCB wiring kit - 16mm² cable

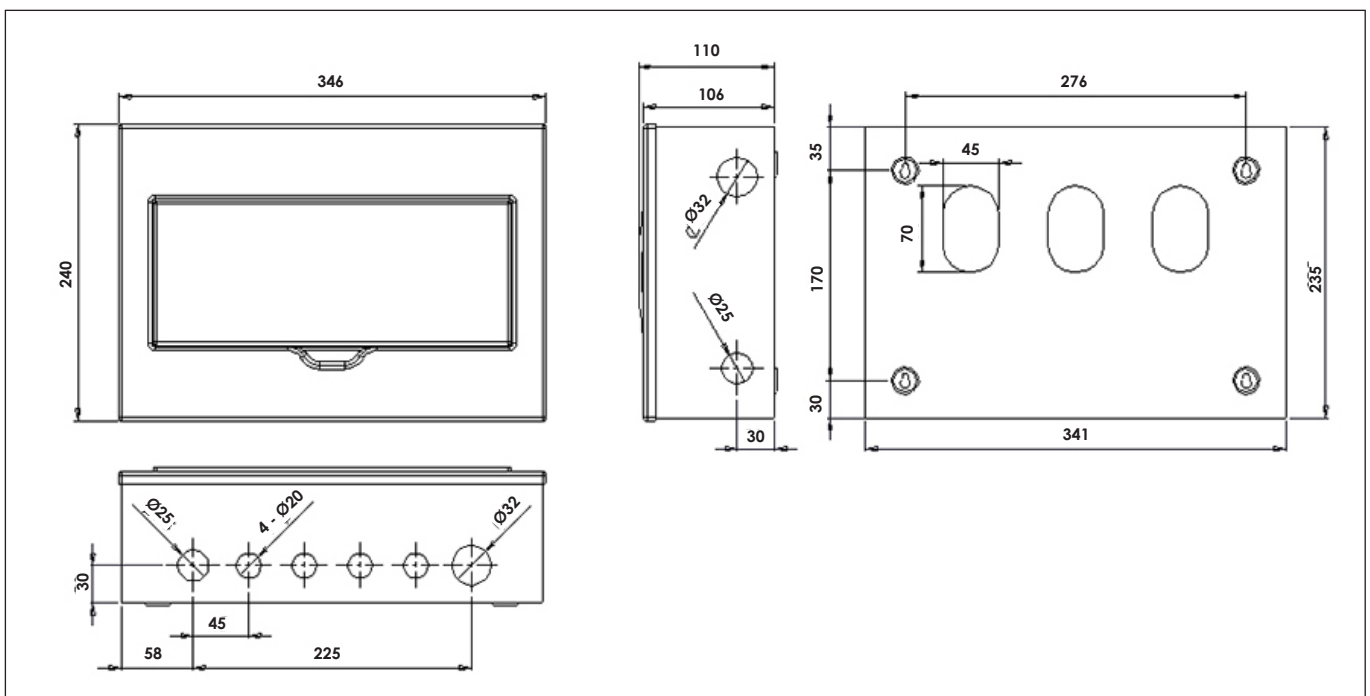
Consumer Unit Board Modules		
MCB	RCCB (RCD)	Main Switch

PBPD14 - 14 Module Board Layout



12 - 14 Way Dimensions

For consumer Unit - PBPD14



-PowerBreaker-

Dual Fully Populated Consumer Units

Consumer Unit Board Modules

MCB	RCCB (RCD)	Main Switch
-----	------------	-------------

PBPD16 - 16 Modules:-

- 10 MCB's - 1 x 40A, 4 x 32A, 2 x 16A, 3 x 6A
- 2 x RCCB 80A, Type A, 30mA
- 80A RCCB wiring kit - 16mm² cable

PBPD16 - 16 Module Board Layout



PBPD18 - 18 Modules:-

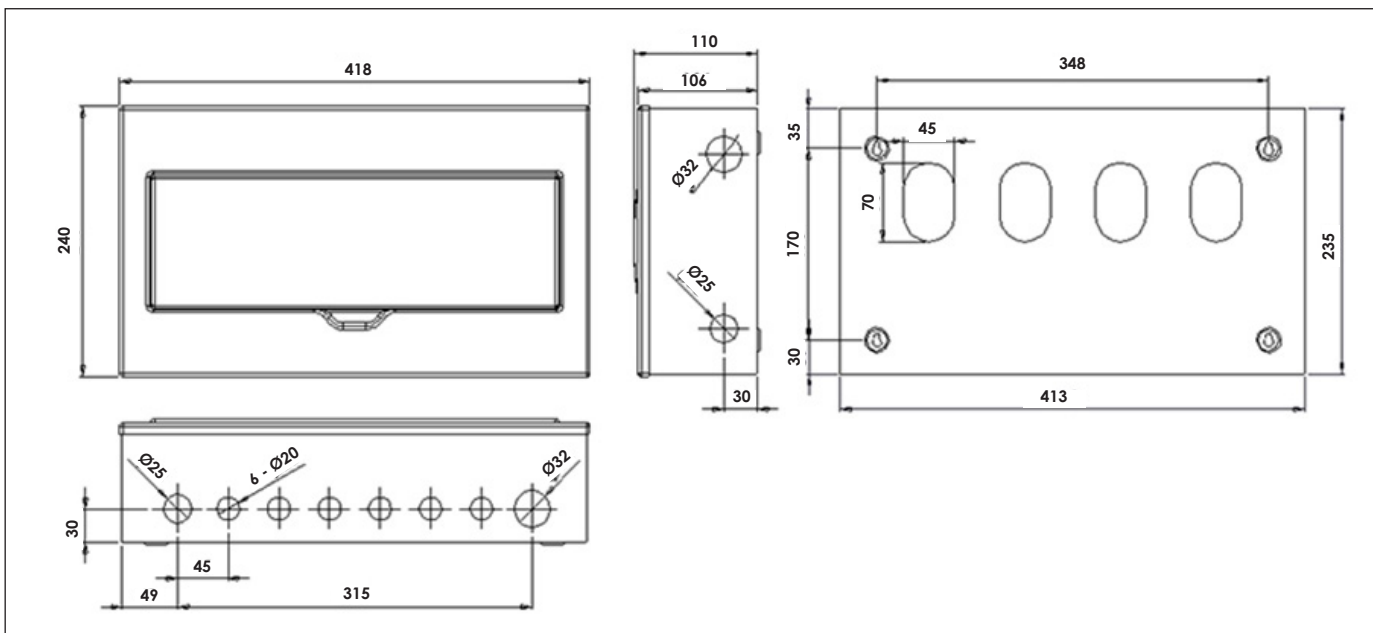
- 10 MCB's - 1 x 40A, 4 x 32A, 2 x 16A, 3 x 6A
- 2 x RCCB 80A, Type A, 30mA
- 80A RCCB wiring kit - 16mm² cable
- 2 x Module blanking plates

PBPD18 - 18 Module Board Layout



16 - 18 Way Dimensions

For consumer Units - PBPD16 & PBPD18



-PowerBreaker-

Dual Fully Populated Consumer Units

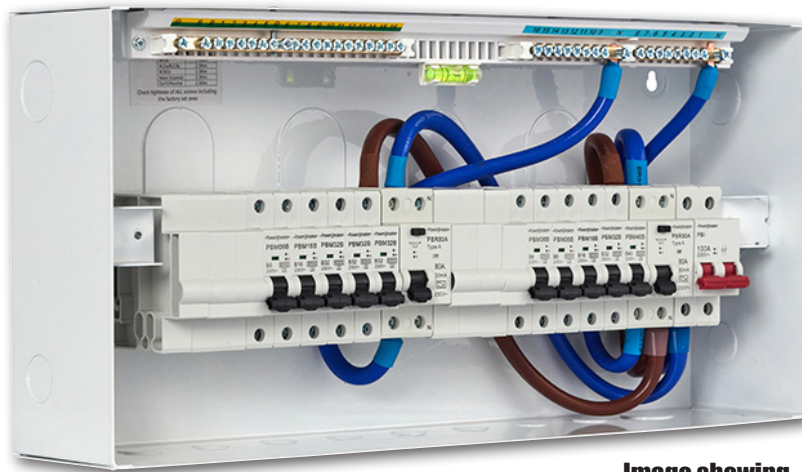
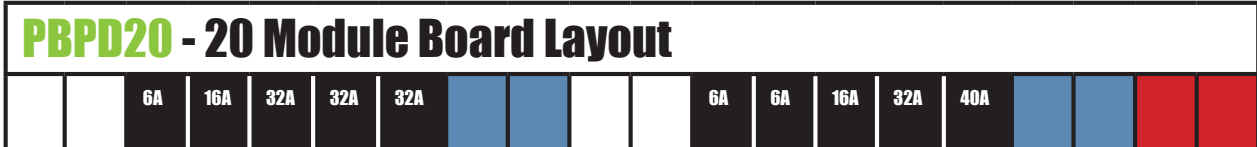


Image showing Inside PBPD22

Consumer Unit Board Modules			
Blanking Module	MCB	RCCB (RCD)	Main Switch

PBPD20 - 20 Modules:-

- 10 MCB's - 1 x 40A, 4 x 32A, 2 x 16A, 3 x 6A
- 2 x RCCB 100A, Type A, 30mA
- 100A RCCB wiring kit - 25mm² cable
- 4 x Module blanking plates



PBPD22 - 22 Modules:-

- 10 MCB's - 1 x 40A, 4 x 32A, 2 x 16A, 3 x 6A
- 2 x RCCB 100A, Type A, 30mA
- 100A RCCB wiring kit - 25mm² cable
- 6 x Module blanking plates



TECHNICAL DATA SHEET



Tel: 01279 772 772
 Fax: 01279 422 007
 Email: sales@greenbrook.co.uk
 www.greenbrook.co.uk

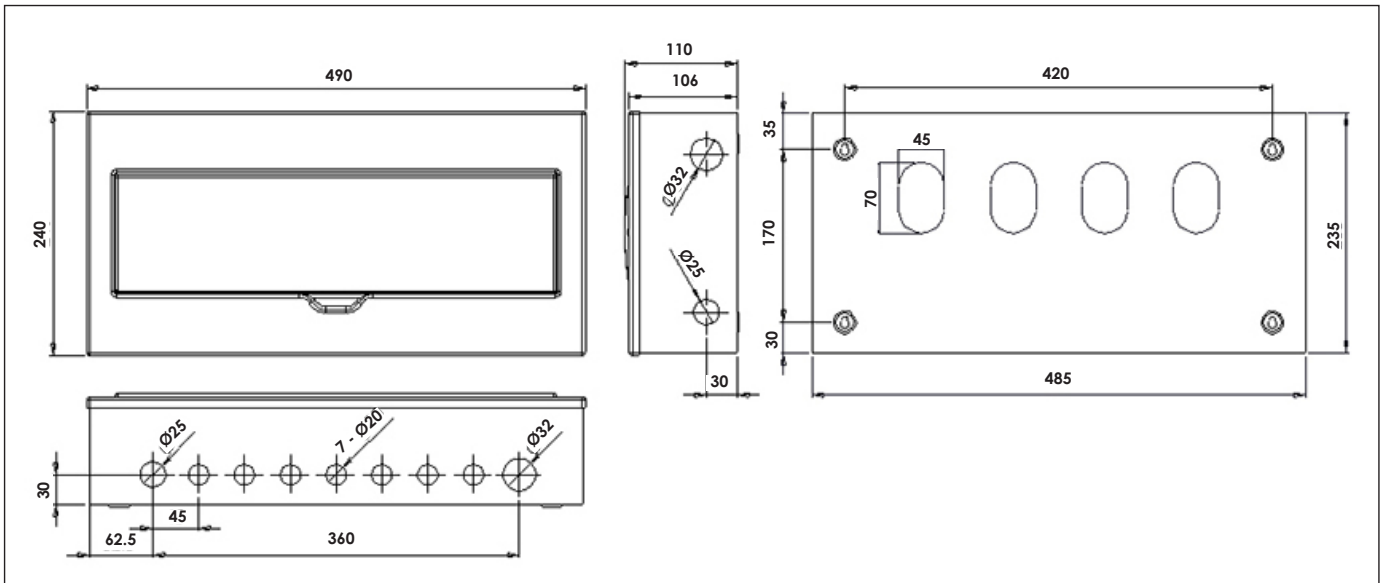


-PowerBreaker-

Dual Fully Populated Consumer Units

20 - 22 Way Dimensions

For consumer Unit - PBPD20 & PBPD22



Technical Information

	PBPD14	PBPD16	PBPD18	PBPD20	PBPD22
Description	Dual Fully Populated Consumer Units				
Barcode	5012739 648847	5012739 648854	5012739 648861	5012739	5012739 648878
Weight					
Impact Rating	IK 05	IK 05	IK 05	IK 05	IK 05
IP Rating	IPX4	IPX4	IPX4	IPX4	IPX4
Colour	White Ral 9003	White Ral 9003	White Ral 9003	White Ral 9003	White Ral 9003
Enclosure	Steel	Steel	Steel	Steel	Steel
Guarantee	3 Years				
Conforms To	BS EN 61439-3				



Image showing
PBPD16

TECHNICAL DATA SHEET

**GREEN
BROOK**
ELECTRICAL

Tel: 01279 772 772

Fax: 01279 422 007

Email: sales@greenbrook.co.uk

www.greenbrook.co.uk

